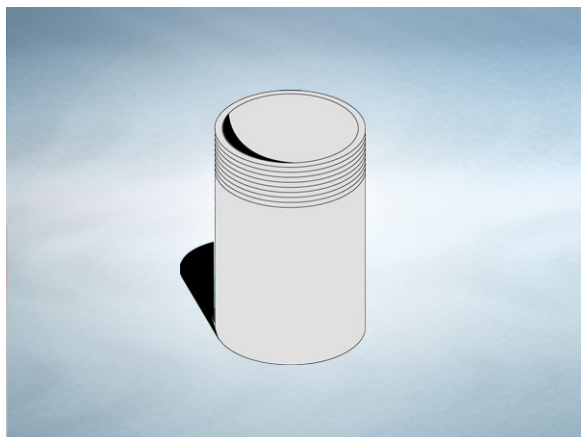


Product Details

T302 Adaptor

Technical Data

**Dimensions:**

120 - Length

Connection - 110mm Plastic, 100mm DIN19522 / 4" BS416 / Harmer SML

Materials - UPVC

General Description:

T series Threaded Pipework Adaptor, with 4" BSP inlet and 110.2 dia. outlet. Spigot adaptor, enables gullies with BSP threaded outlet to be connected to pipework. Longer spigots can be made in 10mm increments up to 900mm. To specify/order add suffix "-" and length (mm).

Materials:

PVC: Used for standpipe and selected pipework adaptors. A cost effective, fire resistant material.

All dimensions are in millimetres unless stated. In line with general practice all dimensions shown are nominal.

Wade International

Third Avenue, Halstead, Essex, CO9 2SX.

Telephone: +44 (0)1787 475151

Fax: +44 (0)1787 475579

e-mail: wadetech@alumascwms.co.uk

website: <https://www.alumascwms.co.uk/brands/wade/>